

# Xtender Ski carrier 739

**739**/1000-41-6

**5** *års garanti*  
*years warranty*  
*Jahre Garantie*  
*ans de garantie*

## Components:

Two ski holders with locks.  
Mounting kit for Thule square section and aero load bars.

## Materials:

Ski carrier of anodized aluminium. Rubber sections of EPDM. Plastic parts of PA66, PA6 and POM.

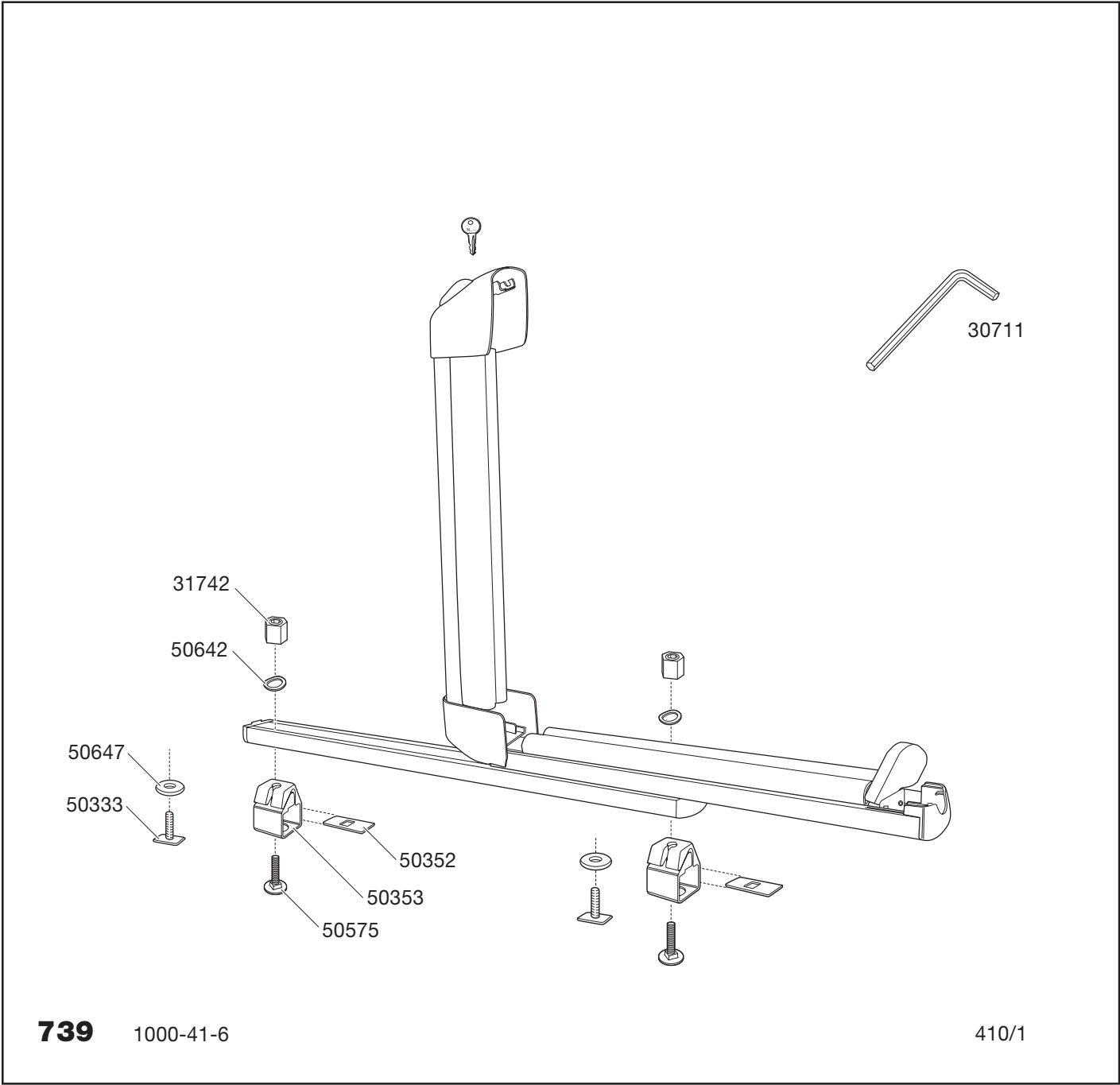
## Mounting, etc.:

Horizontal holder for skis or snowboards. Fitted either on the load carrier with square-section load bars or load carrier profiles with T-track. Withdrawable for simple loading.



- Slide function that makes it very simple to load and unload the skis.
- Wide rubber sections protect the skis and provide space for the ski bag.
- Push-button opening for simple use.
- Double lock function locks both the skis and the ski carrier to the load carrier.
- Fits all load carrier bars of square and aero cross-section.
- For 6 pairs of skis or four snowboards.
- TÜV/GS approved.
- Thule One Key System.

# Xtender Ski carrier 739



Individual packs

Pallet

Product	EAN	Kg	L/W/H in cm
739	7313020041605	4,8	84/14/13

Product	Qty/kg	L/W/H in cm
739	45/232	120/80/120