

Thule Wave Surf 832

832/1000-68

5 *års garanti*
years warranty
Jahre Garantie
ans de garantie

Components:

Base, attachment strap and mounting bag.

Materials:

Plastic parts in PA and TPE.
Strap in polypropylene.

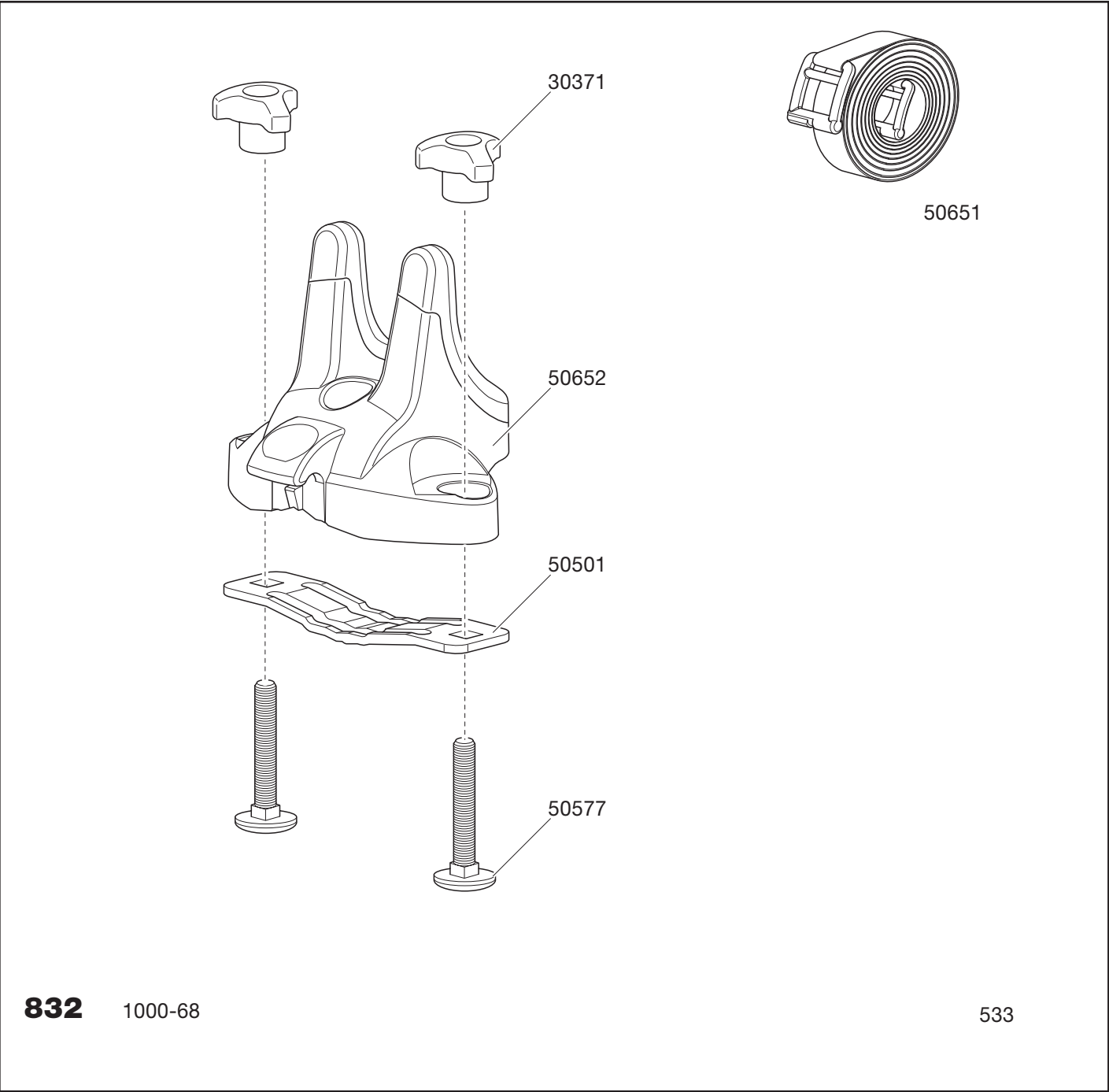
Mounting, etc.:

Mount in accordance with the instruction included in the packaging. If possible, place surfboard in carrier with tail towards front of vehicle. When carrying two boards, place second board on top of first one. Adjust all bases and ensure side of lower board contacts rubber on base. Tighten all knobs firmly and evenly.



- Provides lateral transport stability with soft cradles.
- Two board capacity as standard, no longer need for a second strap.
- Two straps included.
- Strong, easy to use padded straps provide board protection and transport security.
- Mounts to square bars and around aero bars.
- TÜV approved.

Thule Wave Surf 832



8321000-68

533

Individual packs

Pallet

Product	EAN	Kg	L/W/H in cm
832	7313020012995	1,6	40/15/10,6

Product	Qty/kg	L/W/H in cm
832	150/240	120/80/120